



Tulalip Health System

JIM STEINRUCK, HEALTH ADMINISTRATOR

2017 INLAND NORTHWEST STATE OF REFORM HEALTH POLICY CONFERENCE



Tulalip Health System

THS
Development

Integration of
Services



Tulalip Health System

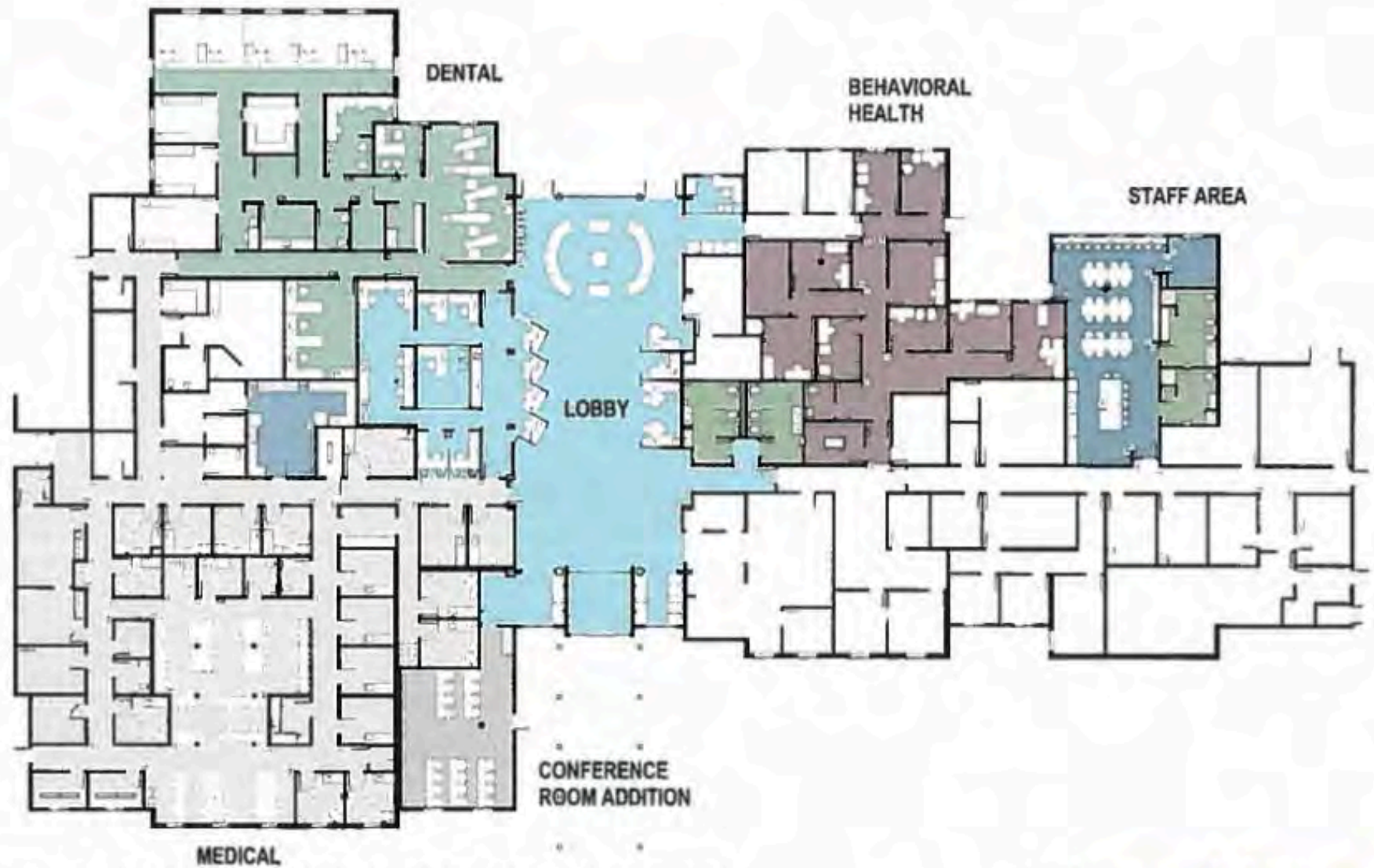
THS
Development

Integration of
Services

Clinic Remodel
Whole Person
Care

“Mind, Body and
Spirit”





KAREN I. FRYBERG TULALIP HEALTH CLINIC

tgb | architects



Tulalip Health System

THS Development

Integration of
Services

Clinic Remodel

Whole Person
Care
“Mind, Body and
Spirit”

Expansion of
Community &
Public Health
Services and
Relocation





Tulalip Health System

THS Development

Integration of
Services

Clinic Remodel
Whole Person Care
“Mind, Body and
Spirit”

Expansion of
Community & Public
Health Services and
Relocation

“Wrap Around Care”
Comm/Public
Health, Tribal
Hospital Liaison,
PRMCE
Comm. Nursing



Tulalip Health System

THS Development

Integration of
Services

Clinic Remodel
Whole Person Care
“Mind, Body and
Spirit”

Expansion of
Community & Public
Health Services and
Relocation

“Wrap Around Care”
Comm/Public
Health, Tribal
Hospital Liaison,
PRMCE
Comm. Nursing

Consolidated
Healthcare
Transport System



Tulalip Health System

THS Development

Integration of
Services

Clinic Remodel
Whole Person Care
“Mind, Body and
Spirit”

Expansion of
Community & Public
Health Services and
Relocation

“Wrap Around Care”
Comm/Public
Health, Tribal
Hospital Liaison,
PRMCE
Comm. Nursing

Consolidated
Healthcare
Transport System

Revamping the way
we recruit
“healthcare team
members”



Tulalip Health System

THS Development

Integration of
Services

Clinic Remodel
Whole Person Care
“Mind, Body and
Spirit”

Expansion of
Community & Public
Health Services and
Relocation

“Wrap Around Care”
Comm/Public
Health, Tribal
Hospital Liaison,
PRMCE
Comm. Nursing

Consolidated
Healthcare
Transport System

Revamping the way
we recruit
“healthcare team
members”

AAAHC
Accreditation
“Journey”
(12-24 month
process)



Tulalip Health System

THS Development

Integration of
Services

Clinic Remodel
Whole Person Care
“Mind, Body and
Spirit”

Expansion of
Community & Public
Health Services and
Relocation

“Wrap Around Care”
Comm/Public
Health, Tribal
Hospital Liaison,
PRMCE
Comm. Nursing

Consolidated
Healthcare
Transport System

Revamping the way
we recruit
“healthcare team
members”

AAHC
Accreditation
“Journey”
(12-24 month
process)

Customer, Provider
and Staff
Engagement
Program (PRMCE
contract assistance)
Re-branding



Tulalip Health System

THS Development

Integration of
Services

Clinic Remodel
Whole Person Care
“Mind, Body and
Spirit”

Expansion of
Community & Public
Health Services and
Relocation

“Wrap Around Care”
Comm/Public
Health, Tribal
Hospital Liaison,
PRMCE
Comm. Nursing

Consolidated
Healthcare
Transport System

Revamping the way
we recruit
“healthcare team
members”

AAAHC
Accreditation
“Journey”
(12-24 month
process)

Customer, Provider
and Staff
Engagement
Program (PRMCE
contract assistance)
Re-Branding

Major Services
Provided



Major Services Provided

Medical (Acute and Scheduled Care)

Dental

Lab

Pharmacy

Imaging/Diagnostics

Complimentary Health

Vision Services

WIC

Nutrition (RD)

Diabetes Care

Wisdom Warrior (CDSM)

Behavioral Health and Recovery (Kids→Elders)

Community Health



Tulalip Health System

THS Development

Integration of
Services

Clinic Remodel
Whole Person Care
“Mind, Body and
Spirit”

Expansion of
Community & Public
Health Services and
Relocation

“Wrap Around Care”
Comm/Public
Health, Tribal
Hospital Liaison,
PRMCE
Comm. Nursing

Consolidated
Healthcare
Transport System

Revamping the way
we recruit
“healthcare team
members”

AAAH
Accreditation
“Journey”
(12-24 month
process)

Customer, Provider
and Staff
Engagement
Program (PRMCE
contract assistance)
Re-Branding

Major Services
Provided

Recruitment of
Clinical Specialists
to physically
practice in our clinic

Register Now for Our Fall Conferences!

“Steering Toward Success: Achieving Value in Whole-Person Care” is a free, one-day conference designed to help primary care practices, behavioral health providers and interested stakeholders who are transitioning to whole-person care. **Be sure to register soon – the Tacoma venue is almost full but space is still available at our October 26 conference in Moses Lake!**

- [Best Western Plus Lake Front Hotel](#), Moses Lake October 26, 2017
- [Hotel Murano](#) Tacoma, September 25, 2017

Don't miss this opportunity to learn best practice strategies and the latest information on practice transformation including value-based care, and physical and behavioral health integration from some of the State's leading experts. CME credit is available!