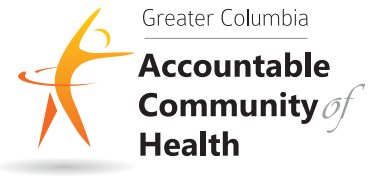


OVERVIEW



Overview Sheet for Greater Columbia ACH

The Greater Columbia ACH is a collaboration of community leaders from a variety of sectors with a common interest in improving health. Accountable Communities of Health (ACHs) are an essential component of Washington's Health Innovation Plan, known as "Healthier Washington," which aims to transform the health system in the state to bring better health, better care and lower costs to Washington residents. Greater Columbia ACH includes 10 counties and the Yakama Nation.

BACKBONE ORGANIZATION

Greater Columbia Accountable Community of Health

Carol Moser, Executive Director

Aisling Fernandez, Communications Coordinator

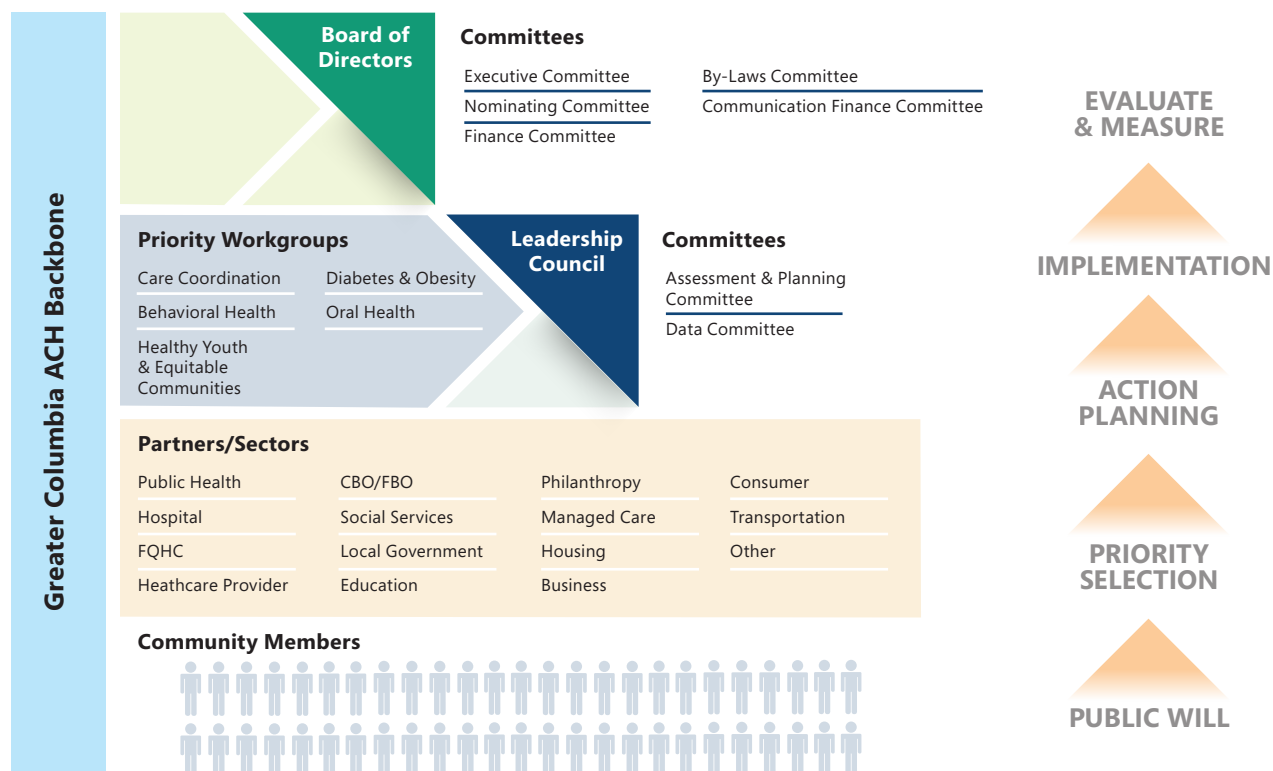
BOARD OF DIRECTORS

Public Health	Hospital	FQHC	Healthcare Provider	Mental Health Provider	CBO/FBO	Social Services	Local Gov't	
Columbia County Public Health Department Meghan Debolt	Yakima Memorial Hospital Eddie Miles	Tri-Cities Community Health Martin Valadez, President	Sunnyside Community Hospital Brian Gibbons, Treasurer	Comprehensive Mental Health Ed Thornbrugh	Catholic Family and Child Services Darlene Darnell	SE WA Aging and Long Term Care Lori Brown	Greater Columbia Behavioral Health Ken Roughton	
Education	Philanthropy	Managed Care	Housing	Workforce Dev	Tribes	Public Safety	Consumer	Transportation
Educational Service District 123 Les Stahlnecker	Three Rivers Community Foundation Carrie Green	United Healthcare Amina Suchoski	Yakima Neighborhood Health Rhonda Hauff, Vice-President	Washington State Allied Health Center of Excellence Dan Ferguson	Yakama Nation Frank Mesplie	Kittitas Valley Fire and Rescue John Sinclair, Secretary	Northwest Justice Project Jefferson Coulter	People for People Madelyn Carlson

Mission: The mission of the Greater Columbia Accountable Community of Health is to advance the health of our population by decreasing health disparities, improving efficiency of health care delivery, and empowering individuals and communities through collaboration, innovation, and community engagement.

The GCACH Board represents over 17 sectors within our geographic region. With support from the state, they are voluntarily organizing to coordinate activities, jointly implement health-related projects, and advise state agencies on how to best address health needs within their area. They are not intended to duplicate or replace existing services.

Greater Columbia Accountable Community of Health Organization Chart



The GCACH has identified five health priorities within our regional service area: Care Coordination, Diabetes/Obesity, Behavioral health, Healthy Youth & Equitable Communities, and Oral Health, and has formed working groups around each priority.

Each group is analyzing data, sharing information, and assessing existing programs and gaps within the region in order to prioritize critical needs. Community-based, cross-sector coalitions are an effective and efficient way to address complex problems. Called "Collective Impact," this model of problem solving allows an issue to be viewed through the lens of a variety of knowledgeable people with a shared agenda who coordinate their collective efforts. Essential to the model is tracking progress, making continuous improvement, and having the support of a backbone agency.

If you or your organization has any responsibility for the health of your community, consider becoming involved in an ACH. ACH's represent a formal opportunity to achieve results you will not get working alone. They do this by connecting those with similar concerns and goals, allowing them to share information and coordinate activities.

For further information or to get involved go to www.greatercolumbiaach.org or call:

Carol Moser: 509-460-4584

Aisling Fernandez: 509-460-4548

REGIONAL NEEDS ASSESSMENT

Measures for which **all** counties in the region had outcomes **worse** than the state

- Access to dentists
- Access to exercise opportunities
- Access to mental health providers
- Children in poverty
- Healthy community design
- Median household income
- Poor academic performance