

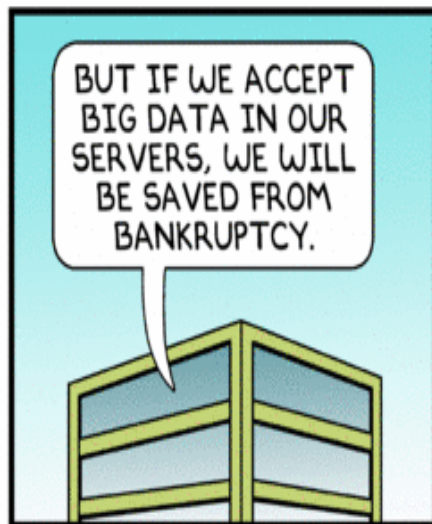
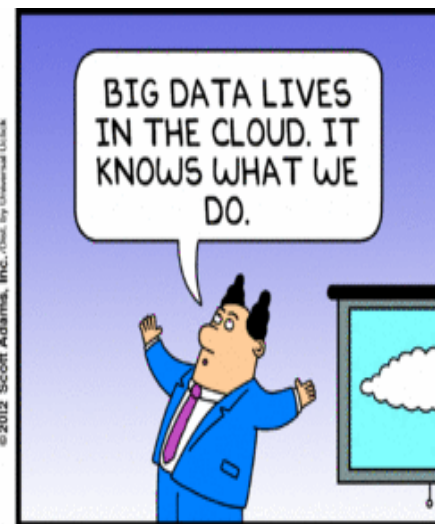
Using Big Data to Empower Consumer Choice

Oregon State of Reform Health Policy
Conference

September 24, 2014

Agenda

- Big data
- Ideal state for consumers
- The best and worst of health information
- What is coming next
- Questions and debate
- Discussion: What do you think?



Big Data on the Gartner Hype Cycle Chart

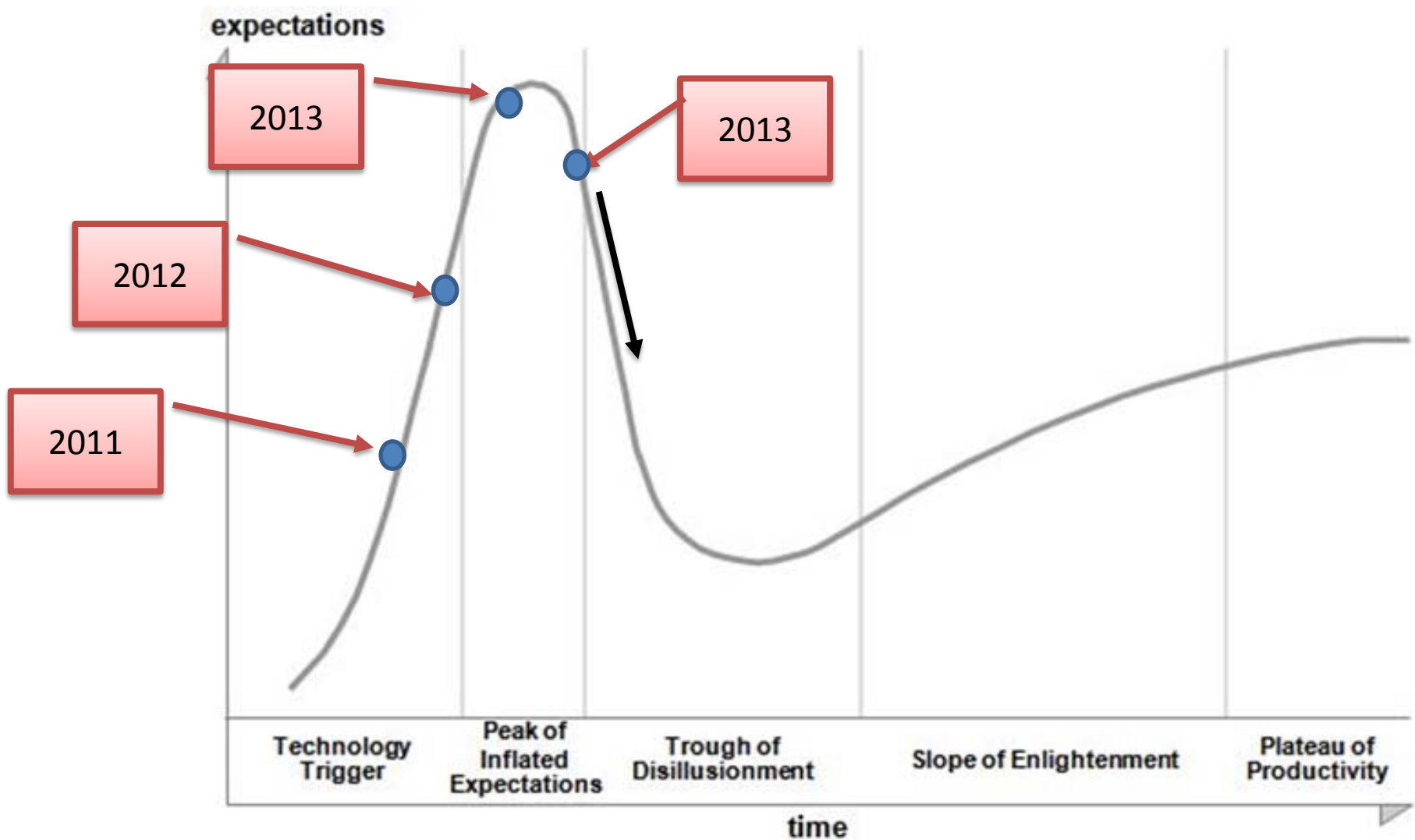
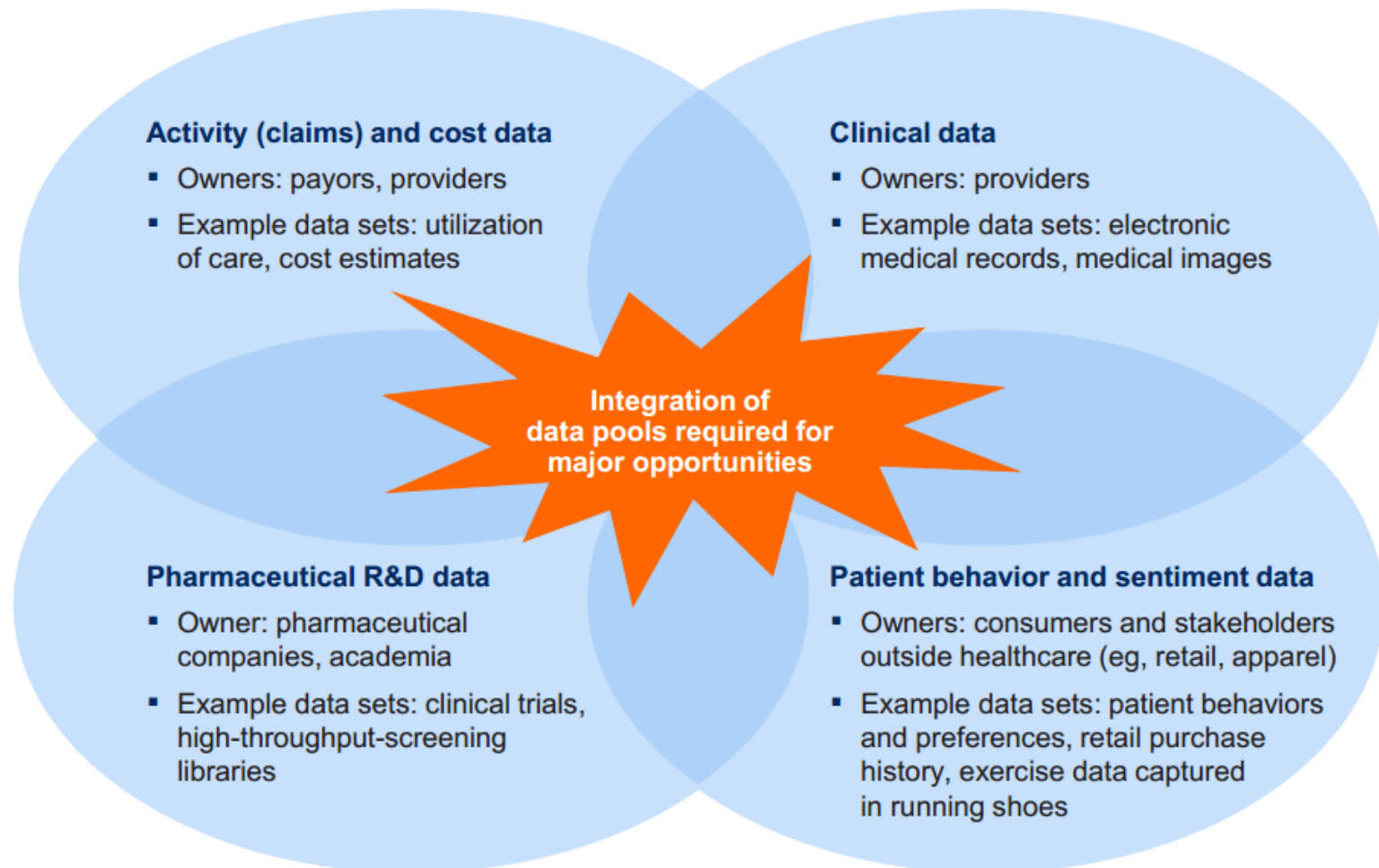
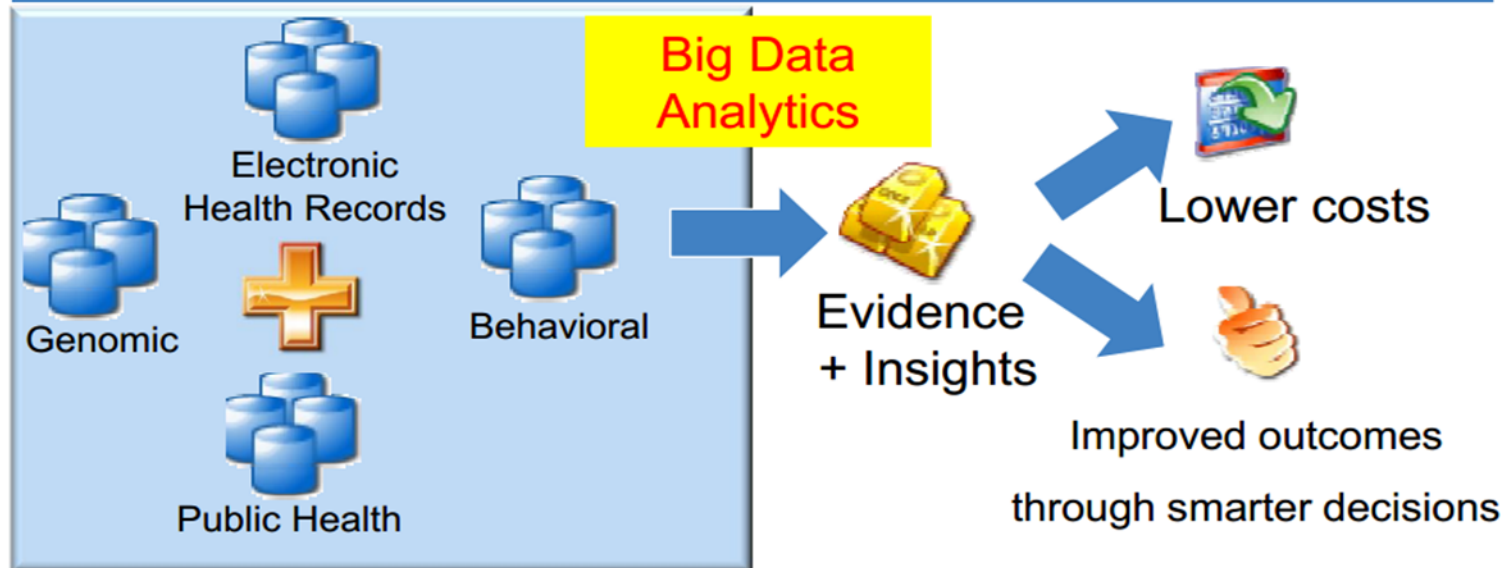


Exhibit 2: Primary data pools are at the heart of the big-data revolution in healthcare.



Source: McKinsey Global Institute analysis

Overall Goals of Big Data Analytics in Healthcare



- Take advantage of the massive amounts of data and provide right intervention to the right patient at the right time.
- Personalized care to the patient.
- Potentially benefit all the components of a healthcare system i.e., provider, payer, patient, and management.

8



Data Available Now

Claim Payment Transactions

Pharm Payment Transactions

Clinical record systems

Genomic

Behavioral / social

Useless in caring for patients but reproducible and consistent for data analytics

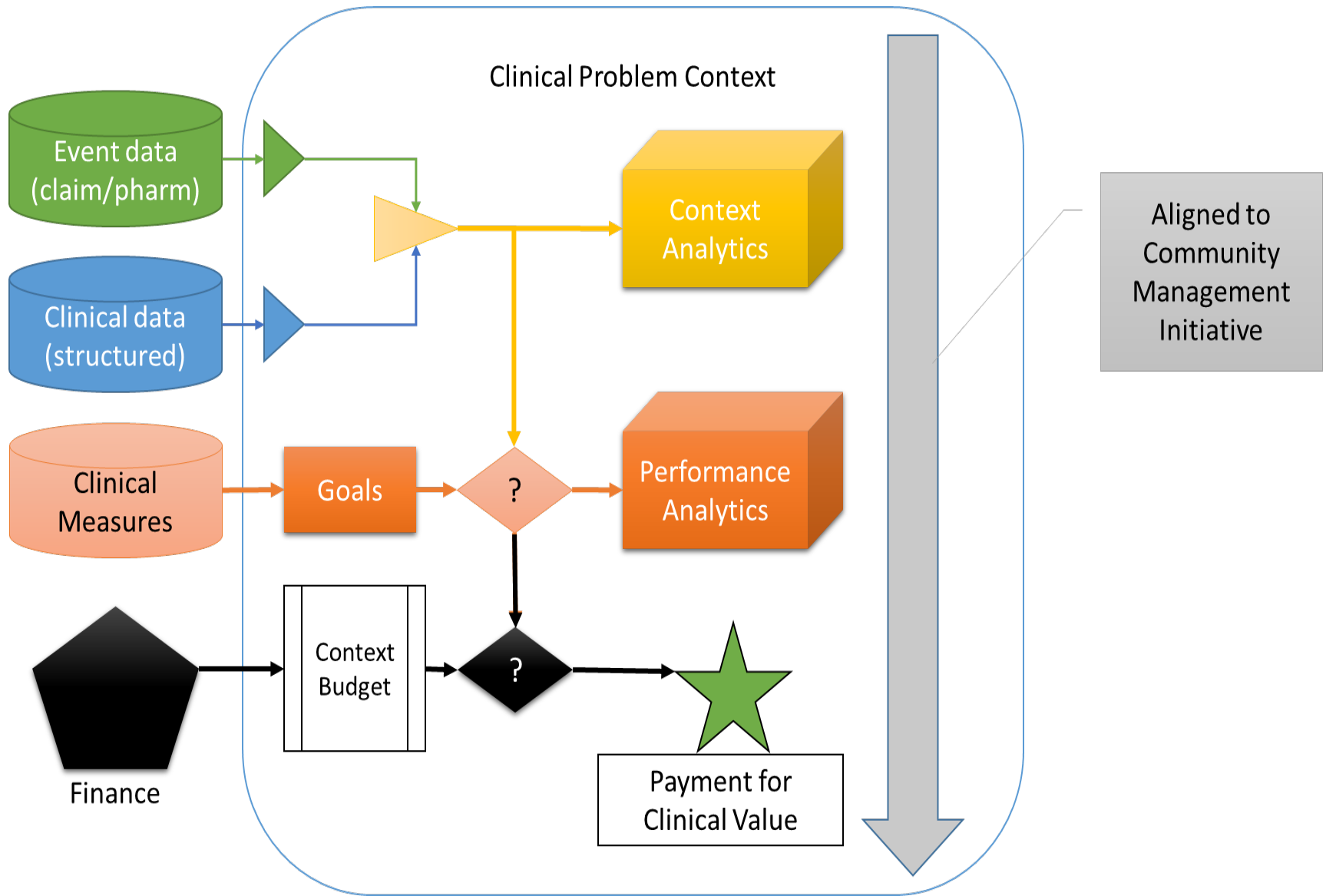
Most useful in care of patients but ambiguous and variable for data analytics

Little practical availability

Analytic
Usefulness

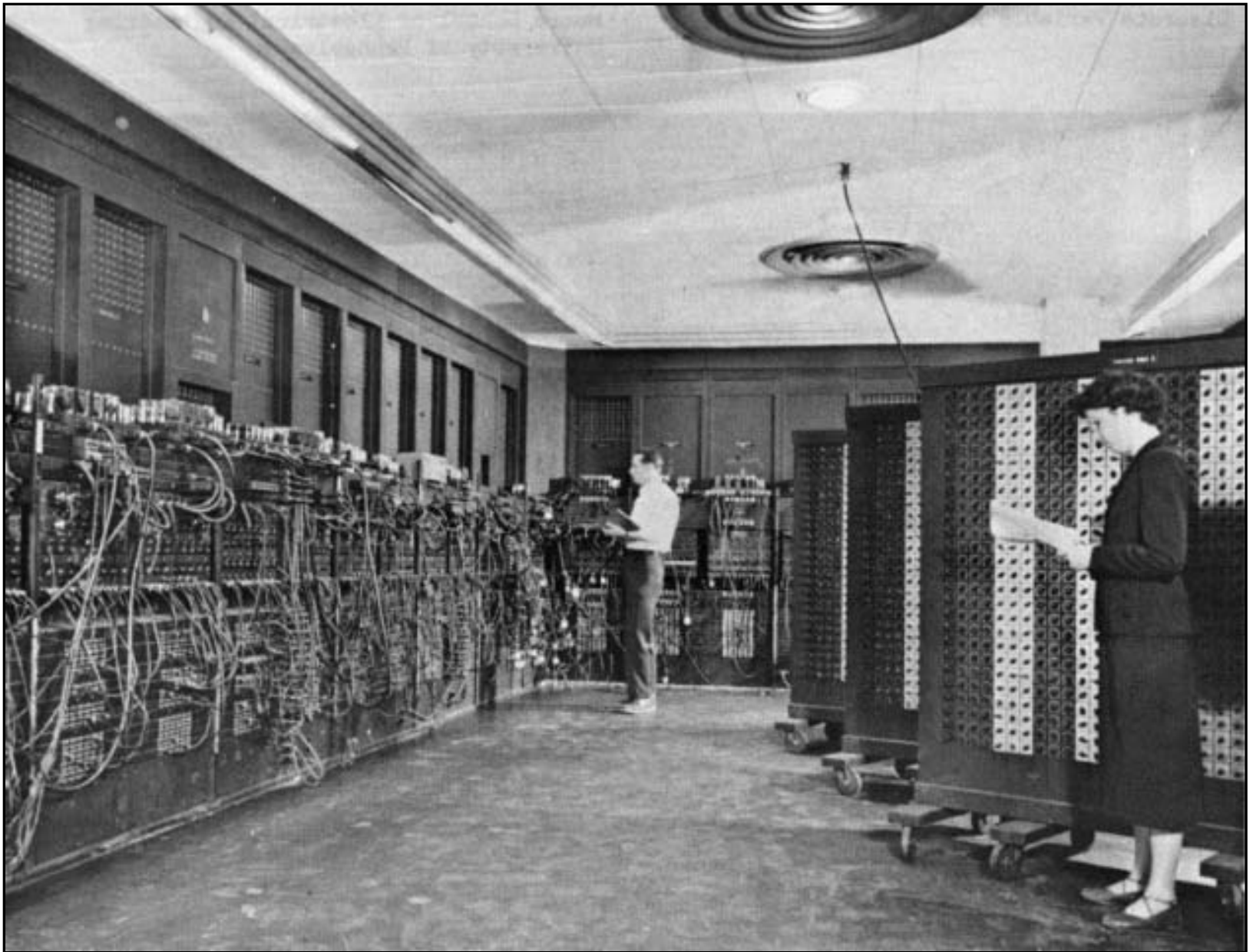
Context examples

1. Primary Care Management
2. Congestive Heart Failure
3. Diabetes
4. Chronic Obstructive Pulmonary Dis.
5. ED Utilization
6. CCO or HEDIS Metrics
7. Hip Replacement
8. Breast Cancer
9.





- Patients review doctor performance
- Patients can see performance of consulting specialists
- Referring physician and patient use performance to guide referral
- REAL competition based on actual performance and value begins.



Health Information Technology Spending



“We are drowning in information
but starved for knowledge.”

John Naisbitt

- Top five best in consumer information
- Top five worst information in consumer information
- Other suggestions?

Q Corp Mission



To improve the quality and affordability of health care in Oregon by leading community collaborations and producing unbiased information.

Q Corp Partnership



- Started in 2000
- Non-profit
- Neutral, independent
- Multi-stakeholder collaboration
- Over 150 volunteers serving on standing committees

Q Corp Leadership in National Initiatives

- *Aligning Forces for Quality* (Robert Wood Johnson Foundation)
- Chartered Value Exchange (Agency for Healthcare Research and Quality)
- Network for Regional Healthcare Improvement (NRHI)
- CMS Qualified Entity – one of first three recognized in the country

Claims Data Summary: 2006-2014

- 3.5 million unique patients captured in claims since 2006 – demonstrating the value of aggregating data
- 600+ million medical and pharmacy claims records

Claims Data Summary – 2014

- 80% Fully Insured Commercial population
- 35% Self Insured Commercial population
- 100% Medicaid population
- 92% Medicare
 - CMS “Qualified Entity” – Incorporated Medicare FFS Data Spring 2014

2014: 14 Data Suppliers and 25 Primary Care Measures

New Public Measures

-- Added to public reports July 2014

- Asthma Medications – Child

Existing Public Measures

-- Updated July 2014

-- Previously reported 2013

- Breast Cancer Screening (age 50-74)
- Cervical Cancer Screening
- Chlamydia Screening
- Diabetes HbA1c Test
- Diabetes LDL-C Test
- Heart Disease Cholesterol Test
- Well-Child Visits for Children 0-15 Mths, 6+ Visits
- Well-Child Visits for Children 3-6 Yrs
- Appropriate Use of Antibiotics for Sore Throats
- Appropriate Low Back Pain Imaging
- Generic Prescription Fills: SSRIs, SNRIs, DNRIs
- Generic Prescription Fills: Statins

Private Measures

- Breast Cancer Screening (age 40-49)
- Breast Cancer Screening (age 40-69)
- Breast Cancer Screening (age 75-84)
- Breast Cancer Screening (age 85+)
- Diabetes Kidney Screening
- Diabetes Eye Exam
- Well-Child Visits for Children 0-15 Mths, 5+ Visits
- Potentially Avoidable Hospital Admissions (3)
 - Overall, Acute, Chronic
- Potentially Avoidable ED Visits (2)
 - Child, Adult
- Plan 30 day All-Cause Readmissions

NEW:


- Alcohol Misuse, Screening, Brief Intervention, Referral for Treatment (SBIRT)
- Ambulatory Care: Outpatient and ED visits (2)
 - Child, Adult
- Generic Prescription Fills: Anti-hypertensives
- Developmental Screenings in the first 36 Months of Life
- Adolescent Well-Care Visits
- Follow-up Care for Children Prescribed ADHD Medications
 - Initiation
 - Continuation and Maintenance

Q Corp Public Reporting

ABOUT | SIGN UP FOR OUR NEWSLETTER

PARTNER for QUALITY CARE

Tips for Your Care Compare Care What Patients Say



Think you know all there is to know about care for low back pain?

Take the Get Vertical quiz and DON'T TAKE BACK PAIN LYING DOWN! Get vertical now »

COMPARE QUALITY SCORES BY TOPIC

- Women's Health »
- Children's Health »
- Diabetes Care »
- Asthma Care »
- Heart Disease Care »
- Low Back Pain Care »
- Using Antibiotics »
- Using Generic Drugs »

CHOOSING A DOCTOR'S OFFICE OR HOSPITAL?

See quality scores for a Doctor's office in your area »

See quality scores for a Hospital in your area »

TIPS FOR GETTING QUALITY CARE

Getting Quality Care » Caring For You »

LATEST NEWS

EXPENSIVE HOSPITALS: LITTLE EVIDENCE OF BETTER CARE
Jan 29, 2014: A new study finds that hospitals with the highest prices showed little evidence of providing better quality care. A Kaiser...

EQUITY STORIES WEBSITE
Jan 09, 2014: Stories are powerful. They connect us to other people and help us understand their experiences. That's why the Coalition for...

HOW MUCH DOES A NEW HIP COST? EVEN THE SURGEON DOESN'T KNOW
Jan 06, 2014: A new study published in Health Affairs shows that orthopedic surgeons were able to correctly estimate the cost of a...

OREGON MEDICAL ASSOCIATION TO PROMOTE CHOOSING WISELY®
Nov 18, 2013: The Oregon Medical Association has received a grant to help promote the Choosing Wisely® campaign. Choosing Wisely® is...

[Read all news stories »](#)

www.PartnerforQualityCare.org

Public Reporting: Quality

Home » Compare Doctor's Offices » Children's Health Clinic Report

53 Results for:

Children's Health in the region of East Portland Metro

Routine visits to your child's doctor, often called 'well child' visits, help to keep your child healthy. Each visit is an opportunity to check on your child's growth and development and get preventive care. You can also talk to the doctor about any questions or concerns you might have about your child's development. The quality scores below show how each doctor's office rated at providing this recommended care.

Sort: ☒ By Score ☐ Alphabetically

Doctor's Offices	Well Child: 3-6 Years Children 3-6 years old should have at least one visit each year ?	Well Child: 0-15 Months Children should have at least six visits from birth to 15 months old ?
Kaiser Interstate Medical Office East	Better	Better
Kaiser Mount Scott Medical Office	Better	Better
Kaiser Rockwood Medical Office	Better	Better
Adventist Health Sandy	Better	Too few patients to score reliably
Bridge City Family Medical Clinic	Better	Too few patients to score reliably
Providence Bethany	Better	Too few patients to score reliably
Broadway Medical Clinic	Better	Average
Kaiser Division Medical Office	Better	Average

What do these mean?



[« Change Search](#)

[Tips for Children's Health »](#)

Coming Soon: Cost of Care Reports

- Q Corp working with national organizations to measure cost of care and quality
- Q Corp working with local providers to develop useful & valuable cost of care reports
- Reports mailed to providers in fall 2014
- Public reports of rolled up “total cost of care” scores at the clinic level released in fall 2015

Coming Soon

- More useful and actionable patient information
- Easier to use and understand
- Right information at the right time for all parties (appropriate and secure)

Questions?

Mylia Christensen

Executive Director, Oregon Health Care Quality Corporation

Mylia.Christensen@q-corp.org

503-972-0862

Dr. Michael Rohwer

CEO, PHTech

Michael.rohwer@phtech.com

503-362-2818